

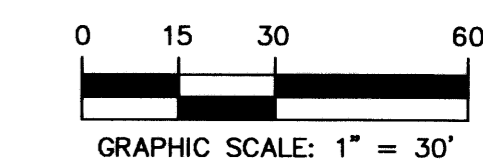
# HARBOUR OAKS

A PARCEL OF LAND LYING AND BEING WITHIN A PORTION OF SECTION 5, TOWNSHIP 42 SOUTH, RANGE 43 EAST, ALSO BEING A REPLAT OF A PORTION OF THE GRANDE AT PALM BEACH GARDENS, PLAT BOOK 92, PAGES 179-182 CITY OF PALM BEACH GARDENS, PALM BEACH COUNTY, FLORIDA

THIS INSTRUMENT WAS PREPARED BY:  
THOMAS C. SHAHAN, P.S.M. #4387 OF  
**GRAVEN THOMPSON & ASSOCIATES, INC.**  
ENGINEERS PLANNERS SURVEYORS  
5114 ONECHOWEE BOULEVARD, SUITE 112, WEST PALM BEACH, FLORIDA 33417  
TEL: (561) 898-5910 FAX: (561) 898-1037  
3563 N.W. 53RD STREET FORT LAUDERDALE, FLORIDA 33309  
TEL: (954) 738-8400 FAX: (954) 738-6408  
FLORIDA LICENSED ENGINEERING, SURVEYING & MAPPING BUSINESS NO. 271  
FLORIDA LICENSED LANDSCAPE ARCHITECTURE BUSINESS NO. C200114  
JANUARY 2003 02-0070

STATE OF FLORIDA  
COUNTY OF PALM BEACH  
THIS PLAT WAS FILED FOR RECORD AT \_\_\_\_\_  
THIS \_\_\_\_\_ DAY OF \_\_\_\_\_, 2003  
AND DULY RECORDED IN PLAT BOOK NO. \_\_\_\_\_  
ON PAGE(S) \_\_\_\_\_  
DOROTHY H. WILKEN,  
CLERK OF THE CIRCUIT COURT  
BY \_\_\_\_\_ DEPUTY CLERK

SHEET 8 OF 8

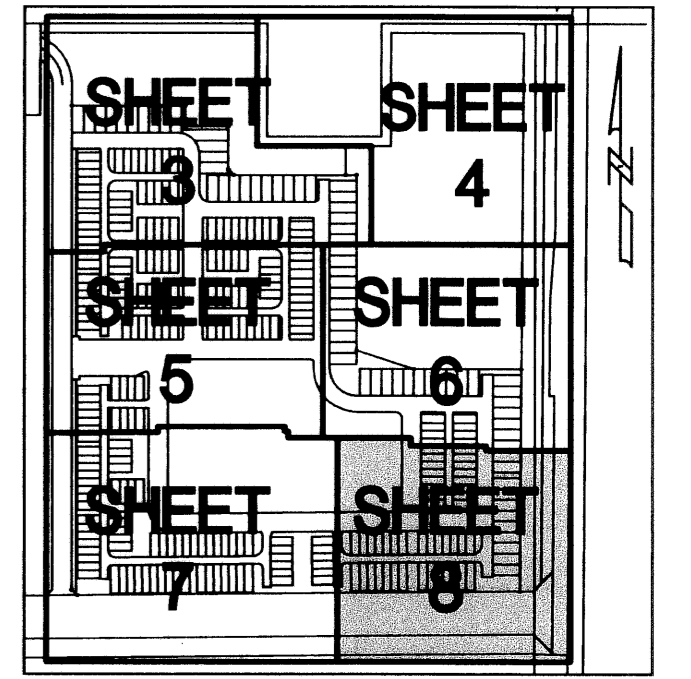


UNIT NUMBER	SQUARE FOOTAGE	UNIT NUMBER	SQUARE FOOTAGE	UNIT NUMBER	SQUARE FOOTAGE	OS NUMBER	ACRES	SQUARE FEET
2501	2097.40	2801	2047.23	3003	1460	OS-23	0.023	1016.55
2502	2042.19	2802	1993.46	3004	1460	OS-25	0.011	483.82
2601	1394.97	2803	1998.56	3005	1460	OS-28	0.010	438.65
2602	1240	2804	2003.66	3006	1460	OS-27	1.003	43705.14
2603	1240	2805	2008.76	3007	1642.50	OS-26	0.023	1008.57
2604	1240	2806	2013.85	3101	1395	OS-29	0.043	1860.01
2605	1240	2807	2018.95	3102	1240	OS-30	0.032	1382.97
2606	1240	2808	2024.05	3103	1240	OS-35	0.359	15641.16
2607	1240	2809	2089.38	3104	1240			
2608	1240	2901	1395	3105	1240			
2701	1384.54	2902	1240	3106	1240			
2702	1240	2903	1240	3107	1395			
2703	1240	2904	1240	3201	1642.50			
2704	1240	2905	1240	3202	1460			
2705	1240	2906	1240	3203	1460			
2706	1240	2907	1393.74	3204	1460			
2707	1240	3001	1642.50	3205	1460			
2708	1240	3002	1460	3206	1460			
				3207	1642.50			

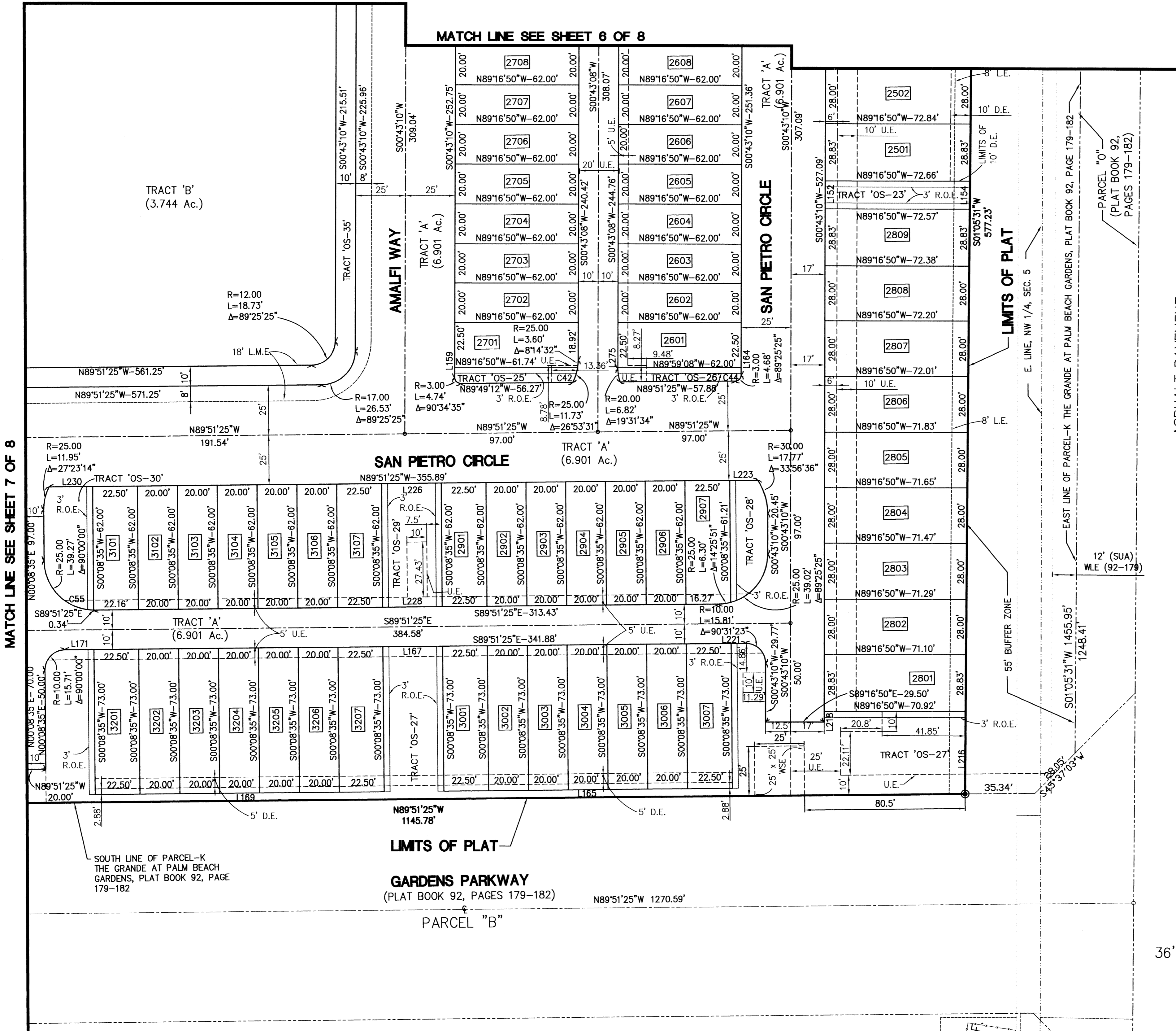
LINE	LENGTH	BEARING
L152	14.00	S00°43'10"W
L154	14.00	N01°05'31"E
L159	5.25	S00°43'10"W
L164	3.86	N00°43'10"E
L165	145.00	N89°51'25"W
L167	30.00	N89°51'25"W
L169	145.00	N89°51'25"W
L171	14.66	N89°51'25"W
L216	41.41	N01°05'31"E
L218	5.27	S00°43'10"W
L221	7.22	N89°51'25"W
L223	14.03	N89°51'25"W
L226	30.00	N89°51'25"W
L228	30.00	S89°51'25"E
L230	21.86	N89°51'25"W
L275	0.76	S00°43'08"W

CURVE	LENGTH	RADIUS	DELTA
C42	11.73	25.00	26°53'30.9"
C44	4.68	3.00	89°25'25"
C55	38.93	25.00	89°13'31"

- LEGEND**
- ⊙ - PERMANENT REFERENCE MONUMENT
  - - PERMANENT CONTROL POINT
  - R - RADIUS
  - L - LENGTH
  - Δ - DELTA
  - ⊕ - CENTERLINE
  - D.E. - DRAINAGE EASEMENT
  - L.M.E. - LAKE MAINTENANCE EASEMENT
  - R.O.E. - ROOF OVERHANG EASEMENT
  - U.E. - UTILITY EASEMENT
  - L.S.E. - LANDSCAPE EASEMENT
  - S.U.A. - SEACOAST UTILITY AUTHORITY
  - OS - OPENSOURCE TRACT
  - W.S.E. - WATER AND SEWER EASEMENT
  - W.M.E. - WATER MANAGEMENT EASEMENT
  - W.L.E. - WATER LINE EASEMENT



KEYMAP  
SCALE: NONE



36'